

Scottish Early Learning & Childcare

Heather Douglas

Early Years Manager

Glasgow City Council

16th January 2024

OFFICIAL



ROLE OF THE LOCAL AUTHORITY

- **Securing provision**

- ensuring that the funded entitlement is available for every eligible child (all 3 and 4 year olds and some 2 year olds)
- direct delivery and/or commissioning from private, voluntary or independent (PVI) providers including home-based Registered Childminders
- other provision for non-eligible children (children under 3 years old) can be offered but is not statutory and so is not government funded

- **Overview of quality**

- all providers of ELC (local authority and PVI) are required to meet the National Standard which sets out what children and families can expect from their ELC experience regardless of where they access it

OFFICIAL



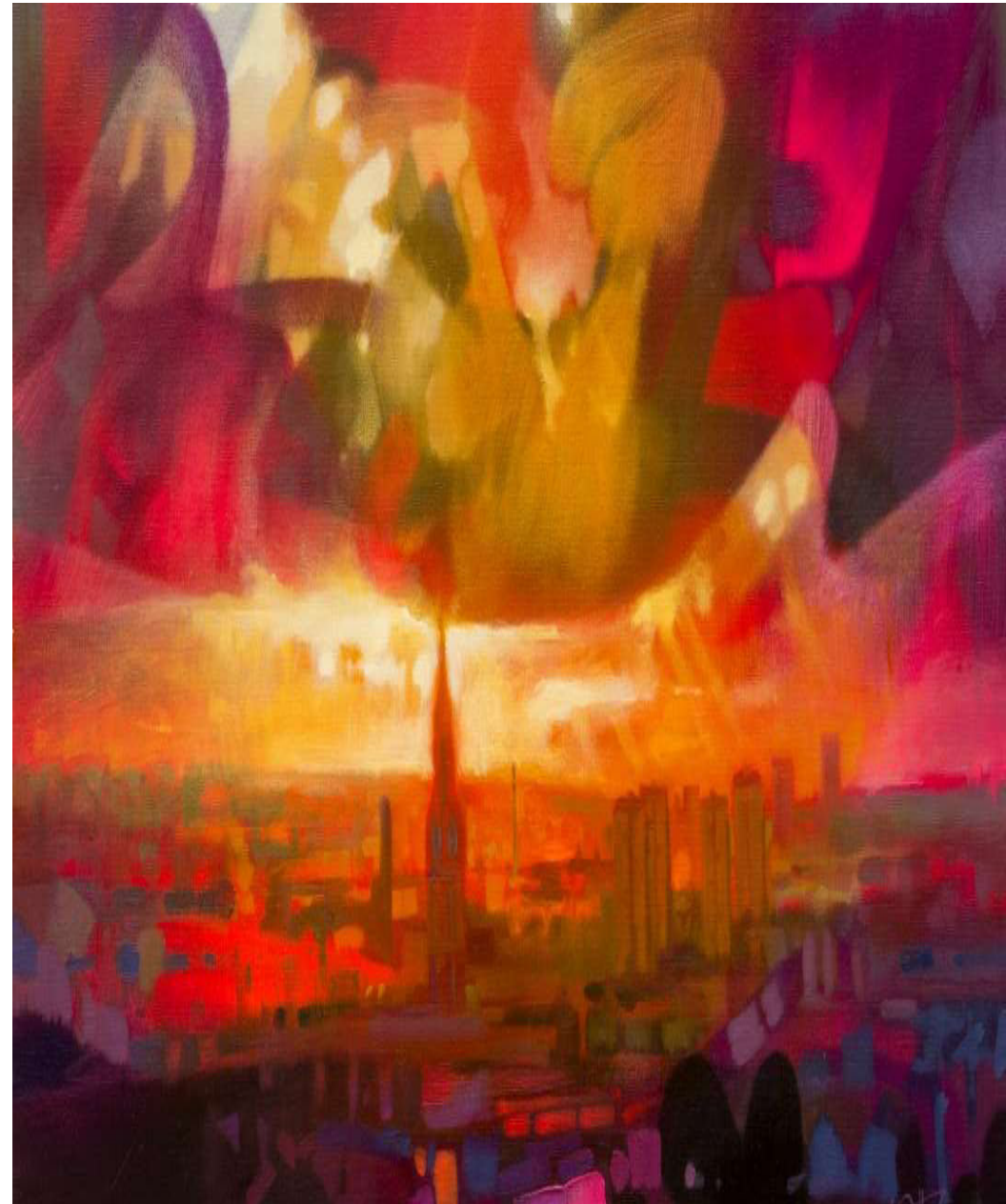
ROLE OF THE LOCAL AUTHORITY (cont.)

- **Overview of quality (cont)**

- the local authority is responsible for ensuring that providers meet the National Standard which relates to the regulatory standards and fair work practices (e.g. payment of living wage)
- beyond providers meeting regulatory standards, the local authority also holds the overview of quality. This means the LA has a role in quality assuring both its own and all other ELC provision in the area.

This makes the LA role complex as they are at the same time a provider of service ; a commissioner of service ; and have a role in considering quality of services (which is over and above the role of the regulator – the Care Inspectorate – and the Education Scotland HMle scrutiny function)

OFFICIAL



ROLE OF THE LOCAL AUTHORITY (cont.)

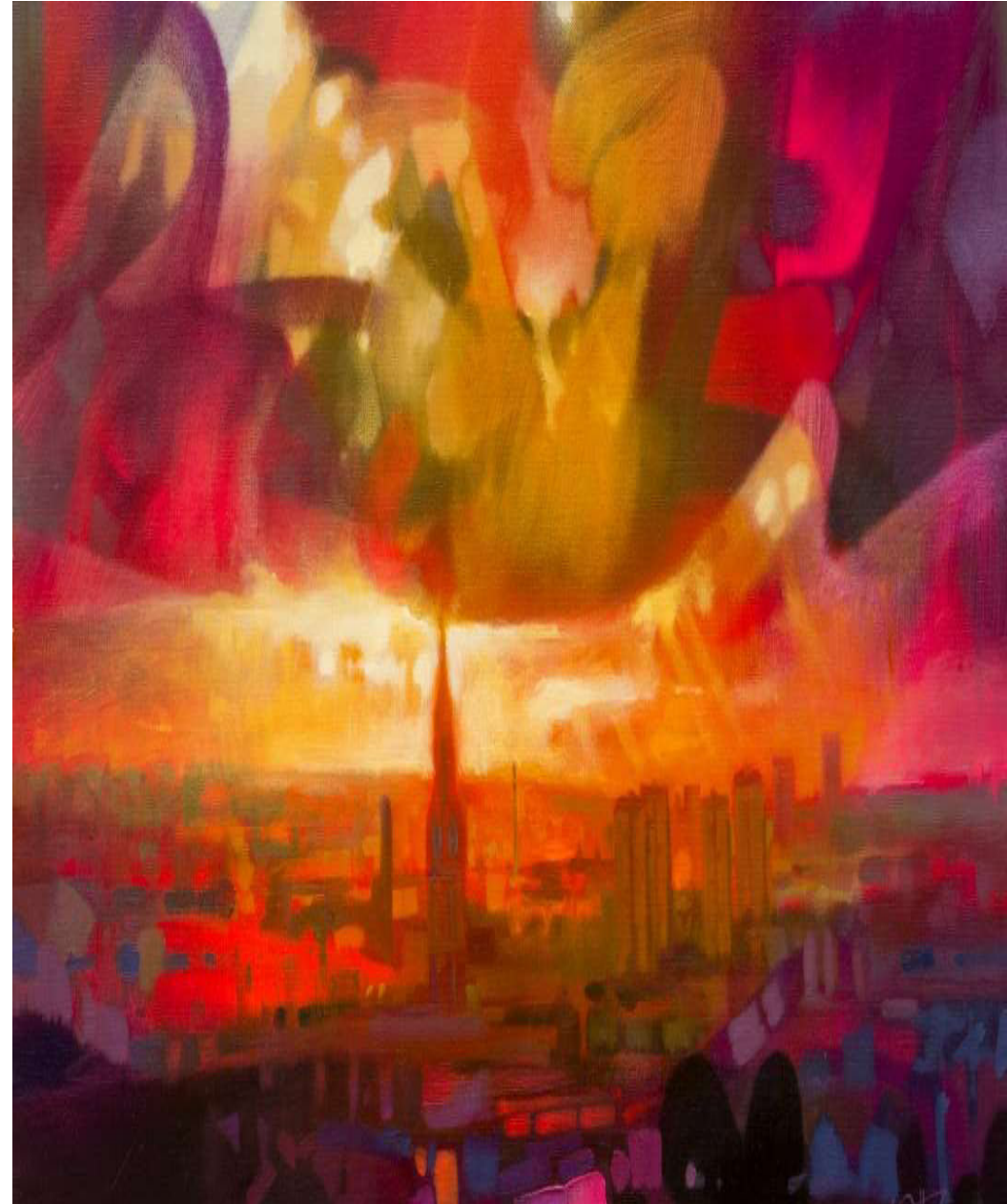
- **Assuring quality & supporting improvement**

- the LA role in assuring quality and supporting improvement in ELC service is not a regulatory or inspection (scrutiny) function

- we help services to track children's learning ; to gather and analyse data about their service and the progress of children ; to consider all of that in-house information with the findings of the external inspection agencies. LAs routinely provide access to training for all ELC providers too

- in Glasgow, senior managers oversee peripatetic teachers who support ELC services with improvement. We have delivered leadership training to all promoted staff which links directly to key documents (eg RtA) and have established a Collaborative Self-Evaluation process where Heads of nursery work with senior managers to peer review each other's services.

OFFICIAL



CURRENT CHALLENGES

- Workforce availability & calibre
- Staff wellbeing & absence
- Managing the pace of change – future government aspirations for expansion

NURSERY VISITS (18th January 2024)

Rowena Nursery (Knightswood)

Elmcroft Nursery (Ruchazie)

Victoria Road Nursery (Govanhill)

OFFICIAL

